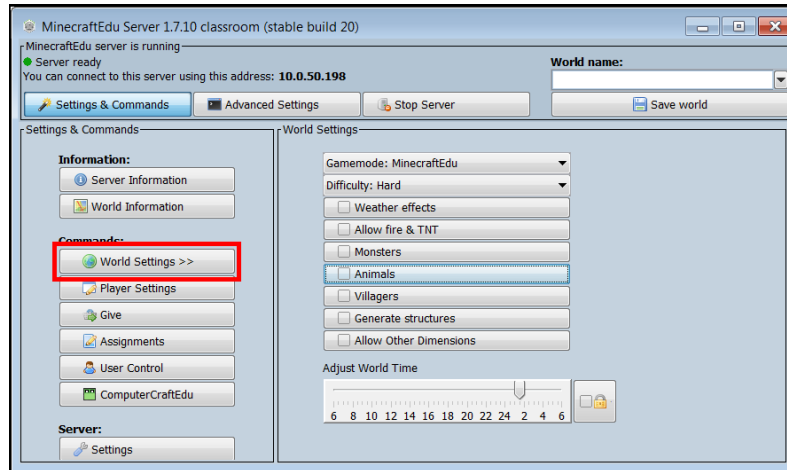


Rationale

MinecraftEdu offers many options when setting up a world and managing the player's experience throughout the world. This cheat sheet explains these options further and offers recommendation for different settings.

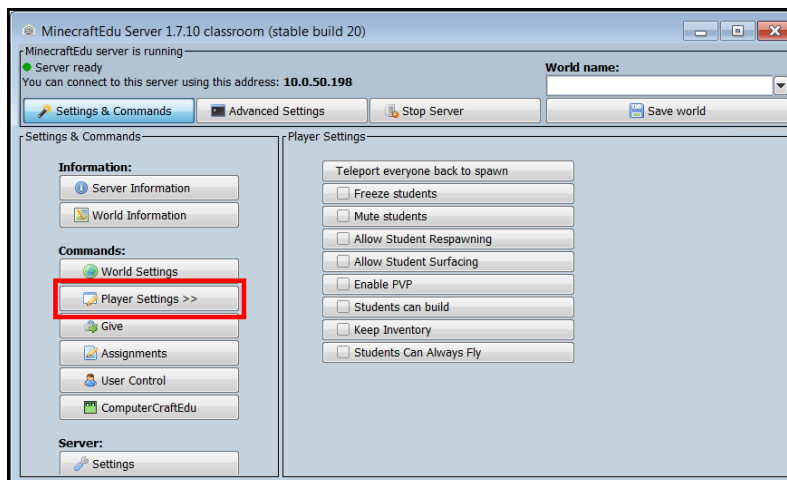
World Settings Recommendations



- Gamemode – **Creative**
- Difficulty – **Easy**
- Weather Effects – **Disabled for Beginners**
- Allow Fire and TNT – **Disabled**
- Monsters – **Disabled**
- Animals – **Either option is acceptable**
- Villagers – **Disabled for Beginners**
- Generate Structures – **Either option is acceptable**
- Allow Other Dimensions - **Disabled**
- Adjust World Time – **Daylight and Lock for Beginners**

*Hovering the mouse over each setting will provide a more detailed description. **Recommended settings are bolded.**

Player Settings



- Mute students – When enabled, students do not have the ability to text each other within the world
- Allow Student Respawn – Students can use this option to return back to their starting location, especially if they are lost
 - **Enabled**
- Allow Student Surfacing – Students can use this option when they are stuck underground or underwater
 - **Enabled**
- Enable PVP – students can engage in combat and injure one another
 - **Disabled**
- Students can build
 - **Enabled**
- Keep Inventory
 - **Enabled**
- Students Can Always Fly
 - **Either option is acceptable**

*Hovering the mouse over each setting will provide a more detailed description. **Recommended settings are bolded.** These settings can be changed at any time.

- Teleport everyone back to spawn – Use this option to pull all players back to one location
- Freeze students – Use this option to assure all students have stopped playing and are paying attention

